




# NINJA Blend BOSS

DB351UK Series | Owner's Guide



## IMPORTANT SAFETY INSTRUCTIONS

PLEASE READ ALL INSTRUCTIONS BEFORE USE • FOR HOUSEHOLD USE ONLY

	Read and review instructions for operation and use.
	Indicates the presence of a hazard that can cause personal injury, death, or substantial property damage if the warning included with this symbol is ignored.
	For indoor and household use only.
When using electrical appliances, basic safety precautions should always be followed, including the following:	

### **⚠**WARNING

- Handle the CrushBlade Assembly with care, as the blades are sharp.
- Remove utensils prior to processing. Failure to remove may cause the cup to be damaged or to shatter, which may cause personal injury.
- Do not blend hot, effervescent, or carbonated liquids. Doing so may cause excessive pressure buildup, resulting in risk of laceration and or the user being burned.
- Remove the CrushBlade Assembly from the cup upon completion of blending. Do not store ingredients before or after blending them in the cup with the blade assembly attached. Some foods may contain active ingredients or release gases that will expand if left in a sealed cup, resulting in excessive pressure buildup that can pose a risk of injury.
- To reduce the risk of injury, fire, electrical shock or property damage, basic safety precautions must always be followed, including the following numbered warnings and subsequent instructions. Do not use appliance for other than intended use.

- 1 Read all instructions prior to using the appliance and its accessories.
- 2 Carefully observe and follow all warnings and instructions. This unit contains electrical connections and moving parts that potentially present risk to the user.
- 3 **ALWAYS** exercise care when handling the CrushBlade Assembly. The blades are sharp, handle carefully. **ONLY** grasp the CrushBlade Assembly by the outer perimeter of the blade assembly base. Failure to use care when handling the blade assembly will result in a risk of laceration.
- 4 Take your time and exercise care during unpacking and appliance setup. This appliance contains sharp blades that can cause injury if mishandled.
- 5 Take inventory of all contents to ensure you have all parts needed to properly and safely operate your appliance.
- 6 **DO NOT** blend hot liquids. Doing so may result in pressure buildup and steam exposure that can pose a risk of the user being burned or lacerated.
- 7 Blades are sharp. Handle carefully. Care shall be taken when handling the sharp cutting blades, emptying the bowl and during cleaning.
- 8 Unplug the appliance from the outlet when not in use, before assembling or disassembling parts, and before cleaning. To unplug, grasp the plug by the body and pull from the outlet. **NEVER** unplug by grasping and pulling the flexible cord.
- 9 Before use, wash all parts that may contact food. Follow washing instructions covered in this instruction manual.
- 10 To protect against the risk of electric shock, DO NOT submerge the appliance or allow the power cord to contact any form of liquid.

# IMPORTANT SAFETY INSTRUCTIONS

PLEASE READ ALL INSTRUCTIONS BEFORE USE • FOR HOUSEHOLD USE ONLY

---

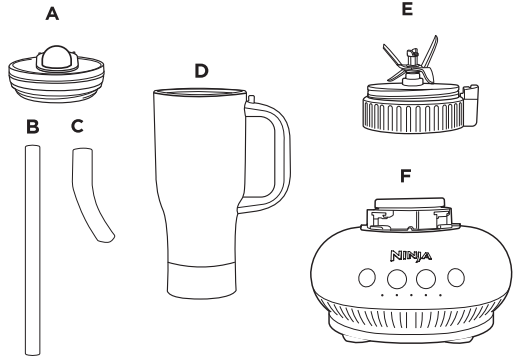
- 11 **DO NOT** use this appliance outdoors. It is designed for indoor household use only.
- 12 This appliance has important markings on the plug blade. The attachment plug or entire cordset (if plug is molded onto cord) is not suitable for replacement. If damaged, the appliance shall be replaced.
- 13 Do not misuse the appliance to avoid potential injuries.
- 14 **DO NOT** operate any appliance with a damaged cord or plug, or after the appliance malfunctions or is dropped or damaged in any manner. This appliance has no user-serviceable parts. If damaged, contact SharkNinja for servicing.
- 15 Extension cords should **NOT** be used with this appliance.
- 16 **DO NOT** allow children to operate this appliance or use as a toy. Close supervision is necessary when any appliance is used near children. Keep the appliance and its cord out of reach of children.
- 17 This appliance is **NOT** intended to be used by people with reduced physical, sensory, or mental capabilities, or lack of experience and knowledge, unless they have been given supervision or instruction concerning use of the appliance by a person responsible for their safety.
- 18 Before each use, inspect blade assembly for damage. If a blade is bent or damage is suspected, contact SharkNinja to arrange for replacement.
- 19 **DO NOT** attempt to sharpen blades.
- 20 **DO NOT** allow the unit or the cord to hang over the edges of tables or counters. The cord may become snagged and pull the appliance off the work surface.
- 21 **DO NOT** allow any part of the unit to contact hot surfaces, including stoves and other heating appliances.
- 22 **ALWAYS** use the appliance on a dry and level surface.
- 23 **NEVER** place a blade assembly on the motor base without it first being attached to the cup.
- 24 Keep hands, hair, and clothing out of the container when loading and operating
- 25 **ONLY** use attachments and accessories that are provided with the product or are recommended by SharkNinja. The use of attachments not recommended or sold by SharkNinja may cause fire, electric shock, or injury.
- 26 During operation and handling of the appliance, avoid contact with moving parts.
- 27 **DO NOT** operate the appliance with an empty container.
- 28 **DO NOT** fill containers past the MAX FILL line.
- 29 **DO NOT** microwave any containers or accessories provided with the appliance.
- 30 **DO NOT** perform grinding operations.
- 31 Before operation, ensure all utensils are removed from containers. Failure to remove utensils can cause containers to shatter and potentially result in personal injury and property damage.
- 32 **NEVER** operate the appliance without lids and caps in place. **DO NOT** attempt to defeat the interlock mechanism. Ensure the container and lid are properly installed before operation.
- 33 **DO NOT** expose the containers and accessories to extreme temperature changes. They may experience damage.
- 34 **NEVER** leave the appliance unattended while in use.
- 35 If you find unmixed ingredients sticking to the sides of the cup, stop the appliance, remove the blade assembly, and use a scraper to dislodge ingredients.
- 36 **DO NOT** attempt to remove the container and lids from the motor base while the blade assembly is still spinning. Allow the appliance to come to a complete stop before removing lid and container.
- 37 If the appliance overheats, a thermal switch will activate and temporarily disable the motor. To reset, unplug the appliance and allow it to cool for approximately 15 minutes before using again.

- 
- 38** The maximum wattage rating for this appliance is based on the configuration of the CrushBlade Assembly and cup. Other configurations may draw less power or current.
- 39 DO NOT** process dry ingredients without adding liquid to the cup; unit is not intended for dry blending.
- 40** To protect against risk of electrical shock, **DO NOT** immerse the motor base in water or other liquid. Unplug the motor base before cleaning.
- 41 NEVER** place a blade assembly on the motor base without the blade assembly first being attached to the cup.

**SAVE THESE INSTRUCTIONS**

# PARTS

- A Lid
- B Straw
- C Silicone Boot
- D 709ml Ninja Blendboss Travel Tumbler
- E CrushBlade Assembly
- F Motor Base  
(attached power cord not shown)



## NOTE:

- The CrushBlade Assembly is not compatible with other Ninja products.
- Colour, number of cups, lids, and accessories vary by model.

# BEFORE FIRST USE

**IMPORTANT:** Review all warnings at the beginning of this Owner's Guide before proceeding.

- 1 Remove all packaging materials from the unit. Exercise care when unpacking blade assembly, as the blades are sharp.
- 2 Wash cup, lid, straw and blade assembly in warm, soapy water using a dishwashing utensil with a handle to avoid direct contact with the blades. Exercise care when handling blade assembly, as the blades are sharp.
- 3 Thoroughly rinse and air-dry all parts.

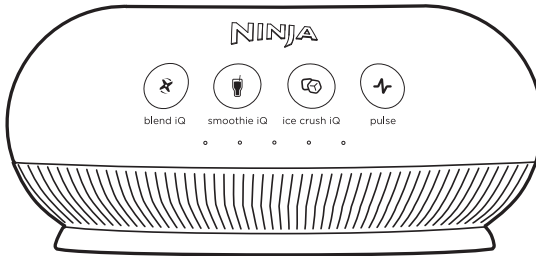
**NOTE:** Handle the CrushBlade Assembly by grasping around the perimeter of the blade assembly base.

# USING THE CONTROL PANEL

---

## AUTO-IQ PROGRAMS

Intelligent preset programs combine unique blending and pausing patterns that do the work for you. Once a preset program is selected, it will start immediately and automatically stop when blending is complete. To stop blending before the end of the program, press the currently active button again.



## AUTO-IQ PROGRAMS:

**BLEND:** Blast through frozen fruits and veggies, best for protein shakes and green juices.

**SMOOTHIE:** Combine your favorite fresh or frozen ingredients, liquids, and powders to create smoothies and protein shakes.

**ICE CRUSH:** Turn ice, juices, and fruit into expertly blended frozen drinks.

## MANUAL PROGRAMS:

**PULSE:** Offers greater control of pulsing and blending. Operates only when **PULSE** is pressed. Use short presses for short pulses and long presses for long pulses.

**PROGRESS BAR:** Upon plugging unit into power outlet, all 5 progress bar lights will blink until cup is installed on motor base.

After 60 seconds, the progress bar lights will time out if not in use.

When running an Auto-iQ program, the progress bar will reflect processing status in increments of 20% completion for each LED. Upon completion, the LED progress bar lights will shut off.

**NOTE:** Manual programs cannot be used in conjunction with any Auto-iQ programs.

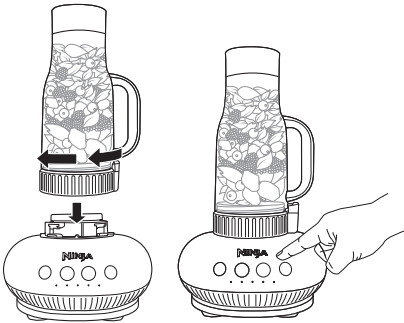
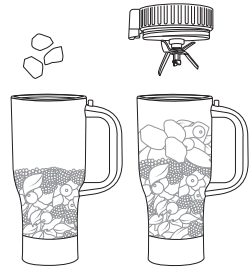
# USING THE NINJA BLENDBOSS

**IMPORTANT:** Review all warnings before proceeding

## ⚠WARNING

- Handle the CrushBlade Assembly with care, as the blades are sharp.
- move utensils prior to processing. Failure to remove may cause the cup to be damaged or to shatter, which may cause personal injury.
- Do not blend hot, effervescent, or carbonated liquids. Doing so may cause excessive pressure buildup, resulting in risk of laceration and or the user being burned.
- Remove the CrushBlade Assembly from the cup upon completion of blending. Do not store ingredients before or after blending them in the cup with the blade assembly attached. Some foods may contain active ingredients or release gases that will expand if left in a sealed container, resulting in excessive pressure buildup that can pose a risk of injury.

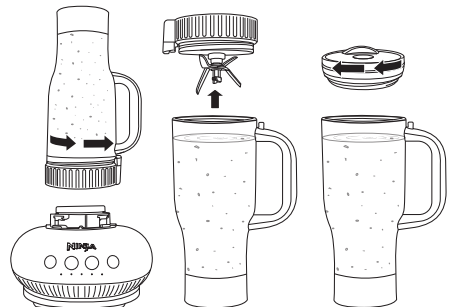
- 1 Plug in motor base and place on a clean, dry, level surface such as a countertop or table.
- 2 Add ingredients to the cup. Adhere to **MIN FILL** line when adding liquid. **DO NOT** add ingredients past the **MAX FILL** line.
- 3 Place the CrushBlade Assembly on the top of the cup and turn clockwise to seal.

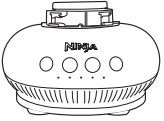


- 4 Turn the cup upside down and install on the motor base by aligning the dot on the blade holder with the dot on the motor base. Then, rotate cup clockwise until it clicks. Once locked in place, the programs will illuminate and the unit will be ready for use.
- 5 If using an Auto-iQ program, select the program that best suits your desired output. The preset feature will automatically stop at the end of the program. To stop the unit at any time, press any program button.

**NOTE:** When making thicker recipes like smoothies or protein shakes, pull the sleeve back to make sure all ingredients are fully blended before taking on the go.

- 6 Remove the cup from the motor base by turning it anticlockwise and then lifting up.
- 7 Flip the cup right-side up then remove the blade assembly by twisting anticlockwise. **DO NOT** store blended contents with the blade assembly attached. Only use the Lid to cover. Exercise care when handling the blade assembly, as the blades are sharp.
- 8 To enjoy on the go, install the straw if desired. Place the lid onto the cup. The lid is designed to be threaded on for both left- and right-handed users. To attach, begin with the lid oriented toward you while holding the cup in your preferred hand. Twist clockwise to secure.



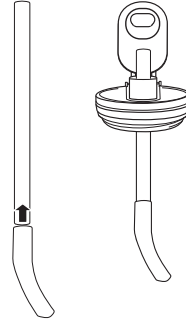
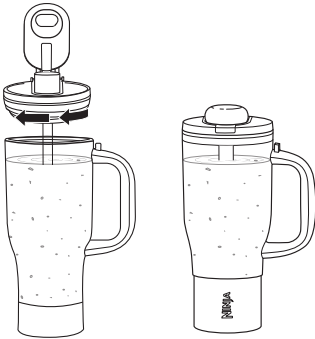


- 9 Unplug the unit when finished. Refer to the Care & Maintenance section for cleaning and storage instructions.

## STRAW ASSEMBLY

---

- 1 Align and secure the straw and silicone boot.
- 2 With the cap open, insert the straw through the bottom of the lid.



- 3 Twist the lid onto the vessel keeping the cap open.
- 4 Close the cap of the lid once the lid is secure on the cup.

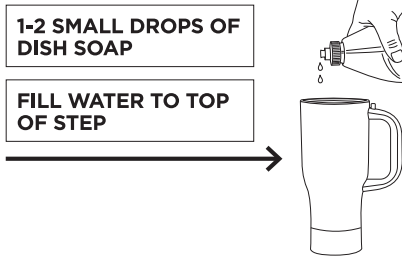
# CARE & MAINTENANCE

---

## CLEANING

### • Hand-Washing Cup

Wash cup, straw and lid in warm, soapy water. Use a dishwashing utensil with handle to reach bottom of the cup. Thoroughly rinse and air-dry all parts.



### • Hand-Washing Blade Holder

Wash blade assembly in warm, soapy water. Use a dishwashing utensil with handle to avoid direct contact with the blades. Exercise care when handling the blade assembly as the blades are sharp. Thoroughly rinse and air-dry all parts.

For best cleaning result, wash blade holder within an hour of use, focusing on crevices, slots and the interlock where build up may occur.



## STUCK-ON INGREDIENTS IN THE NINJA TRAVEL TUMBLER

- Rinse the cup and blade assembly under **WARM WATER** after processing.
- Fill the cup up halfway with warm water and add **1-2 SMALL DROPS** of dish soap.
- Screw on the blade assembly and press Blend.
- Once complete empty contents.

### • Dishwasher

Cup, straw, lid and blade assembly are top-rack dishwasher safe **ONLY**. Ensure the blade assembly and lid are removed from the container before placing in the dishwasher. **DO NOT** use on heated dry cycle.

### • Motor Base

Unplug the unit before cleaning. Wipe motor base with a clean, damp cloth.

## STORING

For cord storage **DO NOT** wrap the cord around the bottom of the base for storage.

**DO NOT** store blended or unblended ingredients in the cup with the blade assembly attached. Use only the Lid when storing blended or unblended ingredients in the cup.

**DO NOT** stack items on top of the cup. Store any remaining attachments alongside the unit or in a cabinet where they will not be damaged or create a hazard.



For recipes & more helpful tips and tricks on how to use your Ninja Blendboss, scan the QR code.

# TROUBLESHOOTING GUIDE

---

**⚠WARNING:** To reduce the risk of shock and unintended operation, turn power off and unplug unit before troubleshooting.

**Display reads: LED 1 illuminating red, LED 2-5 blinking white on progress bar.**

The unit must be unplugged to reset and cancel runtime protection mode. Disengaging the interlock and idle timeout will not reset the unit.

**Display shows selected program blinking**

- If cup is properly installed all program icons will be illuminated. Ensure the interior of the base area is clean of any debris. Ensure blades are not blocked. Add more liquid if needed.

**Display reads: All 5 progress LED lights flash on and off on progress bar.**

- Ensure cup and blade holder are properly installed and aligned on motor base.

**Doesn't mix well; ingredients get stuck.**

- Using the Auto-iQ programs is the easiest way to achieve great results. The pulses and pauses allow the ingredients to settle toward the blade assembly. If ingredients are routinely getting stuck, adding some liquid will usually help.
- When filling the cup, start with 180-240ml of liquid, then seeds, powders, or nut butters. Next, add fresh fruits and vegetables, then yogurt. Finally, add ice or frozen ingredients, then leafy greens.

**Unit moves on counter while blending.**

- Make sure the counter and feet of the unit are clean and dry.

**Lid or CrushBlade Assembly is hard to install on the Cup.**

- Set the cup on a level surface. Carefully place the lid or blade assembly on the top of the cup and align the threads so the lid/blade assembly sits flat. Twist clockwise until you have a tight seal.

## RESETTING THE MOTOR

---

This unit features a unique safety system that prevents damage to the motor and drive system should you inadvertently overload the unit. If the unit is overloaded, the motor will be temporarily disabled. Should this occur, follow the reset procedure below.

- 1 Unplug the unit from the electrical outlet.
- 2 Allow the unit to cool for approximately 15 minutes.
- 3 Remove the cup's lid and blade assembly. Empty the cup and ensure no ingredients are jamming the blade assembly.

**IMPORTANT:** Ensure that maximum capacities are not exceeded. This is the most typical cause of appliance overload.

If your unit needs servicing, please call Customer Service at 0800 862 0453. So we may better assist you, please register your product online at [ninjakitchen.co.uk](https://ninjakitchen.co.uk) and have the product on hand when you call.

## ORDERING REPLACEMENT PARTS

---

To order additional parts and attachments, visit [ninjakitchen.co.uk](https://ninjakitchen.co.uk).

## PRODUCT REGISTRATION

---

Please visit [ninjakitchen.co.uk](https://ninjakitchen.co.uk) to register your new Ninja product within twenty-eight (28) days of purchase. You will be asked to provide the store name, date of purchase, and model number along with your name and address.

The registration will enable us to contact you in the unlikely event of a product safety notification. By registering, you acknowledge you have read and understood the instructions for use and warnings set forth in the accompanying instructions.

### The Ninja Guarantee

When a consumer buys a product in the UK, they get the benefit of legal rights relating to the quality of the product (your "legal rights"). You can enforce your legal rights against your retailer, including Ninja if you bought your Ninja kitchen appliance from [ninjakitchen.co.uk](http://ninjakitchen.co.uk). However, at Ninja we are so confident about the quality of our products that we give the owner an additional, free parts and labour manufacturer's guarantee of up to 2 years.

The guarantee it comes with is an important consideration - and reflects how much confidence the manufacturer has in its product and manufacturing quality.

The manufacturer's guarantee does not affect your legal rights.

### How long are new Ninja machines guaranteed for?

Our manufacturer's guarantee lasts for one year from the date of purchase as standard, or for two years if you register your purchase with us within 28 days.

### How do I register my Ninja guarantee?

If you have purchased your Ninja kitchen appliance directly from [ninjakitchen.co.uk](http://ninjakitchen.co.uk) your guarantee is registered automatically. If you bought it from anywhere else in the UK, you can register your guarantee online within 28 days of purchase.

- To register online, please visit [www.ninjakitchen.co.uk/register-guarantee](http://www.ninjakitchen.co.uk/register-guarantee) or scan the QR code in your instruction booklet.
- Keep a note of the date you purchased the machine.

### IMPORTANT:

- **Keep your receipt** if you bought your Ninja kitchen appliance from anywhere except [ninjakitchen.co.uk](http://ninjakitchen.co.uk). You will need it to claim under your guarantee.
- The free Ninja guarantee only applies in the UK.

### What are the benefits of registering my free Ninja guarantee?

When you register your guarantee, you will get an extra year of cover. We'll also have your details to hand if we ever need to get in touch. If you further agree to receive communications from us, you can also receive tips and advice on how to get the best out of your Ninja kitchen appliance and hear the latest news about new Ninja technology and launches.

### What is covered by the free Ninja guarantee?

Repair or replacement (at Ninja's discretion) of your Ninja machine, including all parts and labour.

### What is not covered by the free Ninja guarantee?

- Normal wear and tear.
- Accidental damage or faults caused by negligent use or care, misuse, neglect, careless operation or handling of the Ninja kitchen appliance which is not in accordance with the Ninja Operating Manual supplied with your machine.
- Damage caused by use of the Ninja kitchen appliance for anything other than normal domestic household purposes.
- Damage caused by use of parts not assembled or installed in accordance with the operating instructions.
- Damage caused by use of parts and accessories which are not Ninja Genuine Components
- Faulty installation (except where installed by Ninja).
- Repairs or alterations carried out by parties other than Ninja or its agents.

### How can I claim under the free Ninja guarantee?

Contact our customer service helpline on

**0800 862 0453**. For service hours please visit our website under 'Contact Us'. It's free to call, and you'll be put straight through to a Ninja representative. You'll also find online support at <https://support.ninjakitchen.co.uk/>.

The Ninja representative will go through some troubleshooting with you, and if we conclude that the item has failed, we will send you a replacement part or a returns label to send the defective item back to us free of charge. When you have delivered the defective product to us, we will send you a replacement.

Please remember that the item will need to be boxed when you return it to us. It can be any suitable box, it does not have to be the original packaging.

### Where can I buy genuine Ninja spares and accessories?

Ninja spares and accessories are developed by the same engineers who developed your Ninja kitchen appliance. You'll find a full range of Ninja spares, replacement parts and accessories for all Ninja machines at [www.ninjakitchen.co.uk](http://www.ninjakitchen.co.uk). Please remember that damage caused by the use of non-Ninja spares may not be covered under your guarantee.





## REGISTER YOUR PURCHASE

 [ninjakitchen.co.uk/registerguarantee](https://ninjakitchen.co.uk/registerguarantee)

 Scan QR code using mobile device

## RECORD THIS INFORMATION

Model Number: \_\_\_\_\_

Serial Number: \_\_\_\_\_

Date of Purchase: \_\_\_\_\_  
(Keep receipt)

Store of Purchase: \_\_\_\_\_

## TECHNICAL SPECIFICATIONS

Voltage: 220-240V, 50-60Hz

Power: 1100 Watts

**SharkNinja Europe Ltd,**  
**1st/2nd Floor Building 3150,**  
**Thorpe Park, Century Way,**  
**Leeds, England, LS15 8ZB**  
**[ninjakitchen.co.uk](https://ninjakitchen.co.uk)**

**SharkNinja Germany GmbH,**  
**Rotfeder-Ring 9,**  
**60327 Frankfurt am Main,**  
**Germany.**  
**[ninjakitchen.eu](https://ninjakitchen.eu)**

Illustrations may differ from actual product. We are constantly striving to improve our products; therefore the specifications contained herein are subject to change without notice.

AUTO-IQ and NINJA are registered trademarks in the United Kingdom of SharkNinja Operating LLC.

© 2025 SharkNinja Operating LLC

DB351UKSeries\_IB\_MP\_Mv10\_251009



**@ninjakitchenuk**